



CEO Nahm-Wook Lee

*Foundation : 2004

*BeRex Corp. : 6, Samseong-ro, 67-gil, Gangnam-gu, Seoul, Korea 06202
Tel: 82 2 568 2754

*BeRex Inc. : 3350 Scott Blvd. STE6101 Sata Clara, CA, 95054, USA
Tel : 408 452 5595

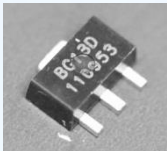
*Homepage : www.berex.com

E-mail : sales@berex.com

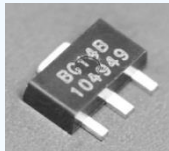


RF & Microwave IC solutions

BeRex has originated from Silicon Valley, CA. USA in 2004 for the next generation products to be the leading marketing, designing, and manufacturing patentable RF components including gain blocks, local drive amps, IF ICs, power amplifiers, discrete devices, switches, mixers, LNAs and other RF integrated circuits.



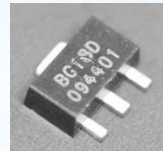
BG13D



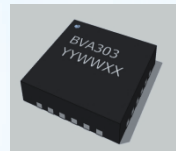
BG14B



BGS3

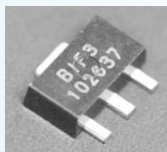


BG18D

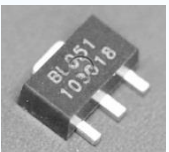


BVA Series

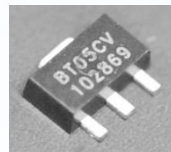
1-1 Gain Block & DVGA



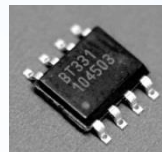
BF13



BL051



BT05CV



BT331

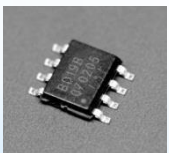


BMT332

1-2 IF Amp / LNA / Driver / High Power

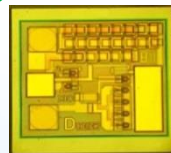


BD0926

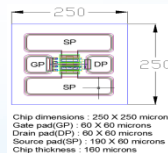


BD09B

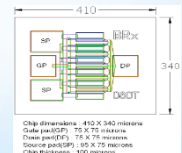
1-3 Divider



HBT



LNA PHEMT



Power PHEMT

1-4 Bare Die

1-1 Gain Block & DVGA

Wideband amplifier, 5~4000MHz, Enhanced system reliability with patent benefits, RoHS, SOT89/86 SMT package
Digital Variable Gain Amplifier at 30~ 4000MHz

1-2 IF / Low Noise / Driver / Medium / High Power Amplifier

High OIP3, P1, 50~3500MHz, Low NF, ESD 1A, Lead free/RoHS-compliant SMT package, InGap HBT, GaAs e-PHEMT

1-3 Divider

High Isolation, Low Insertion loss, MSL3, Lead-free/RoHS-compliant SOIC8/SOT-26 package

1-4 Bare Die

Commercial/Military wireless system/Base station infrastructure/RFID, various product line by power/Chip size